

TEXAS CHILDREN'S HOSPITAL
EVIDENCE-BASED OUTCOMES CENTER
Fever Without Localizing Signs (2-36 Months)
Evidence-Based Guideline

Definition: An acute febrile (temperature $\geq 102.2^{\circ}\text{F}$ [39°C]) illness lasting <7 days with uncertain etiology after completion of a thorough history and physical examination. ⁽¹⁾

Etiology: The most common cause of fever without localizing signs (FWLS) is a viral infection. The challenge lies in the difficulty of distinguishing serious bacterial illness (SBI) from viral illness in this age group. Introduction of the *Haemophilus influenzae* type b (Hib) and heptavalent pneumococcal conjugate (PCV7) vaccines has dramatically decreased the incidence of SBI in infants and children. ⁽²⁻⁴⁾ In 2010, 13-valent pneumococcal conjugate vaccine (PCV13) replaced PCV7 for routine administration to infants and children. PCV13 added six serotypes to the original serotypes of PCV7. ⁽⁵⁾ Since routine PCV13 immunization, invasive pneumococcal infections decreased 42% overall and 53% for children <24 months of age in 2011 compared with the average number of cases for 2007 to 2009 (year 2011, $n = 124$ vs. years 2007 to 2009, mean = 215). ⁽⁵⁾ In 2012, 23 out of 21,285 blood cultures were positive for pneumococcus at Texas Children's Hospital. The positivity rate for 2012 was approximately 0.1%.

Differential Diagnosis

Meningitis	Sepsis/Bacteremia
Bone and joint infections	Enteritis
Urinary tract infection (UTI)	Pneumonia

Inclusion Criteria

- Age 2-36 months
- Infants/Children without underlying conditions
- Actual rectal temp $\geq 102.2^{\circ}\text{F}$ (39°C) OR reported temp of $\geq 102.2^{\circ}\text{F}$ (39°C) in home setting

Exclusion Criteria

- Underlying conditions that affect their immunity or may otherwise increase risk of SBI (e.g., asplenia, sickle cell disease, prematurity, cancer)
- Toxic/Septic appearance ^(6,7)
- Currently receiving antibiotics
- Given routine vaccinations within the previous 48 hours
- Presenting with seizures
- Requiring intensive care management
- With an identified focus of infection (e.g., cellulitis, acute otitis media)
- With a suspicion of meningitis

Clinical Appearance

Toxic ^(1,6,7)

Infants who meet **ANY** of the toxic criteria should receive a full sepsis workup and be admitted to the inpatient area for antibiotic therapy and observation (See Tables 1 & 2).

Lethargy	Unable to console
Hypothermia ($96.8^{\circ}\text{F}/36^{\circ}\text{C}$)	Cyanosis
Capillary refill time >2 seconds	Poor perfusion
Tachypnea or bradypnea	Suspicious of meningitis

Well-appearing

Playful, not irritable, feeding well, easily consoled by caregiver
No signs/symptoms (s/sx) dehydration
No compromise in peripheral perfusion
No s/sx respiratory distress

Ill-appearing

Less playful, irritable with crying, consolable by caregiver
S/Sx mild to moderate dehydration
Peripheral perfusion intact

Table 1. Shock Exam Abnormalities ⁽⁸⁾

	Cold Shock	Warm Shock	Non-specific
Pulses (central vs. peripheral)	Decreased or weak	Bounding	
Capillary refill (central vs. peripheral)	≥ 3 sec	Flash (<1 sec)	
Skin	Mottled, cool	Flushed, ruddy, erythroderma (other than face)	Petechiae below the nipple, any purpura
Mental Status			Decreased, irritability, confusion, <u>inappropriate</u> crying or drowsiness, poor interaction with parents, lethargy, diminished arousability, obtunded

Table 2. Vital Sign Changes of Sepsis (PALS) ⁽⁸⁾

Age-specific Vital Signs			
Age	Heart Rate	Resp Rate	Systolic BP
$>1\text{m} - 3\text{m}$	>205	>60	<70
$>3\text{m} - 1\text{y}$	>190	>60	<70
$>1\text{y} - 2\text{y}$	>190	>40	$<70 + (\text{age in yr} \times 2)$
$>2\text{y} - 4\text{y}$	>140	>40	$<70 + (\text{age in yr} \times 2)$

Diagnostic Evaluation: A thorough clinical history and physical examination are essential to determine risk of SBI. ⁽⁹⁾ The most common bacterial infection in infants and young children is UTI. Risk factors for UTI are detailed in the laboratory section of the guideline. Pneumococcal bacteremia and meningitis prevalence has decreased since the introduction of the pneumococcal conjugate vaccines. ^(10,11)

History: Assess for

- Onset and duration of fever

- Children with at least two doses of PCV13 that present with FWLS should not have a CBC and blood culture obtained. (9,40-44) – Strong recommendation, moderate quality evidence

*NOTE: The references cited represent the entire body of evidence reviewed to make each recommendation.

Condition-Specific Elements of Clinical Management

Treatment Recommendations (2,6,21,60)

Clinical assessment and H&P indicative of a source-refer to the appropriate TCH Guideline and treat as appropriate (e.g., acute otitis media, community-acquired pneumonia, enteritis, urinary tract infection).

In addition to clinical findings the following factors should be considered prior to treatment:

- Availability of reliable follow-up
- Adequate caregiver education
- PCP and caregiver agree with plan

Viral Syndromes & Well-appearing

No antibiotics indicated. In most cases, rapid viral testing is not necessary. Consider UA with micro and culture. Treat symptomatically.

Educate caregiver/patient on symptom management and PCP follow-up.

Antibiotic Recommendations (35,60)

Not recommended in well-appearing infants/children without a focus of a bacterial infection and in the absence of a laboratory workup. Monitor clinically.

Consider administration of IM ceftriaxone (28,61) if:

- CBC abnormal and/or ANC $\geq 10,000/\text{mm}^3$
- No viral signs/symptoms and unable to identify a bacterial source on exam

Recommended dose: 50 mg/kg/dose IM once

Consider insurance/Medicaid formulary restrictions.

Observation Criteria

- Unable to tolerate oral intake or maintain hydration status
- Hypoxemia
- Respiratory distress
- Clinical concern
- Reliable follow-up unavailable

Discharge Criteria

- Tolerating oral intake and maintaining hydration status

Follow-Up Care

Follow up on CSF, blood and urine cultures (if done and discharged prior to **48 hours**- MD to call lab for CSF reading)

See PCP 12-24 hours post discharge

Return to PCP/EC if worsening symptoms

Measures

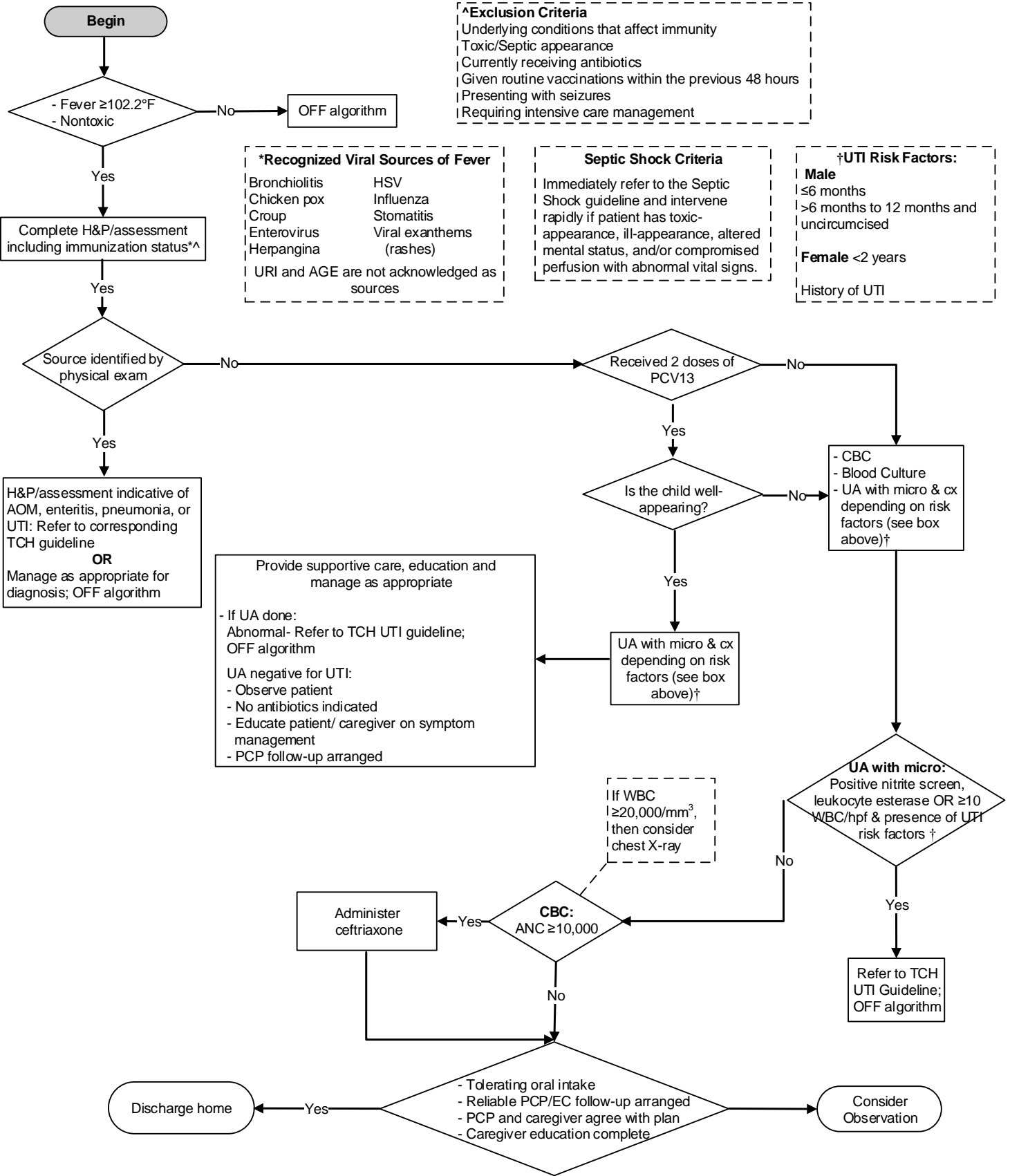
Process

- Contamination Rate
- Type of follow-up post EC or discharge from observation (phone call vs. visit to PCP)
- If return to EC, # of infants/children that received antibiotics on first visit
- # of callbacks for positive blood cultures
- # of callbacks for positive urine cultures of infants/children with negative UA

Outcome

- Length of stay
- Readmission rate

TCH Evidence-Based Outcomes Center Clinical Algorithm for Fever Without Localizing Signs (FWLS) 2-36 Months



^Exclusion Criteria
 Underlying conditions that affect immunity
 Toxic/Septic appearance
 Currently receiving antibiotics
 Given routine vaccinations within the previous 48 hours
 Presenting with seizures
 Requiring intensive care management

***Recognized Viral Sources of Fever**
 Bronchiolitis HSV
 Chicken pox Influenza
 Croup Stomatitis
 Enterovirus Viral exanthems
 Herpangina (rashes)
 URI and AGE are not acknowledged as sources

Septic Shock Criteria
 Immediately refer to the Septic Shock guideline and intervene rapidly if patient has toxic-appearance, ill-appearance, altered mental status, and/or compromised perfusion with abnormal vital signs.

†UTI Risk Factors:
Male
 ≤6 months
 >6 months to 12 months and uncircumcised
Female <2 years
 History of UTI

References

1. Fever of Uncertain Source Guideline Team, Cincinnati Children's Hospital Medical Center: Evidence-based care guideline for fever of uncertain source in children 2 to 36 months of age, <http://www.cincinnatichildrens.org/svc/alpha/h/health-policy/ev-based/fever-2-36-months.htm>, Guideline 10, pages 1-13, October 2003.
2. Clinical policy for children younger than three years presenting to the emergency department with fever. (2003). *Annals of Emergency Medicine*, 42(4), 530-545.
3. Ishimine, P. (2006). Fever without source in children 0 to 36 months of age. *Pediatric Clinics of North America*, 53(2), 167-194.
4. Ishimine, P. (2007). The evolving approach to the young child who has fever and no obvious source. *Emergency Medicine Clinics of North America*, 25, 1087-1115.
5. Kaplan, S. L., Barson, W. J., Lin, P. L., Romero, J. R., Bradley, J. S., Tan, T.Q. et al. (2013). Early trends for invasive pneumococcal infections in children after the introduction of the 13-valent pneumococcal conjugate vaccine. *Pediatric Infectious Disease Journal*, 32(3), 203-207.
6. Baker, M. D., Bell, L. M., & Avner, J. R. (1993). Outpatient management without antibiotics of fever in selected infants. *New England Journal of Medicine*, 329(20), 1437-1441.
7. Jaskiewicz, J. A., McCarthy, C. A., Richardson, A. C., White, K. C., Fisher, D. J., Powell, K. R., et al. (1994). Febrile infants at low risk for serious bacterial infection--an appraisal of the Rochester criteria and implications for management. *Pediatrics*, 94(3), 390-396.
8. Chameides, L., Samson, R., Schexnayder, S., & Hazinski, M. (Eds.). (2012). *Pediatric Advanced Life Support Provider Manual*. Dallas, TX: American Heart Association.
9. Bonsu, B., & Harper, M. (2003). Identifying febrile young infants with bacteremia: Is the peripheral white blood cell count an accurate screen? *Annals of Emergency Medicine*, 42(2), 216-225.
10. Centers for Disease Control and Prevention. (2007). Active bacterial core surveillance report, emerging infections program network, *Streptococcus pneumoniae*, 2006. Available via the internet: <http://www.cdc.gov/ncidod/dbmd/abcs/survreports/spneu06.pdf>.
11. Centers for Disease Control and Prevention. (2008). Active bacterial core surveillance report, emerging infections program network, *Streptococcus pneumoniae*, 2007. Available via the internet: <http://www.cdc.gov/ncidod/dbmd/abcs/survreports/spneu07.pdf>.
12. Stoll, M. L., & Rubin, L. G. (2004). Incidence of occult bacteremia among highly febrile young children in the era of the pneumococcal conjugate vaccine: A study from a children's hospital emergency department and urgent care center. *Archives of Pediatrics & Adolescent Medicine*, 158(7), 671-675.
13. Williams, E. R., Meza, Y. E., Salazar, S., Dominici, P., & Fasano, C. J. (2007). Immunization histories given by adult caregivers accompanying children 3-36 months to the emergency department: Are their histories valid for the Haemophilus influenzae B and pneumococcal vaccines? *Pediatric Emergency Care*, 23(5), 285-288.
14. Czaja, C., Crossette, L., & Metlay, J. P. (2005). Accuracy of adult reported pneumococcal vaccination status of children. *Annals of Epidemiology*, 15(4), 253-256.
15. Carstairs, K. L., Tanen, D. A., Johnson, A. S., Kailes, S. B., & Riffenburgh, R. H. (2007). Pneumococcal bacteremia in febrile infants presenting to the emergency department before and after the introduction of the heptavalent pneumococcal vaccine. *Annals of Emergency Medicine*, 49(6), 772-777.
16. AbdelSalam, H. H. M., & Sokal, M. M. (2004). Accuracy of parental reporting of immunization. *Clinical Pediatrics*, 43(1), 83-85.
17. Barzilay, E. J., O'Brien, K. L., Kwok, Y. S., Hoekstra, R. M., Zell, E. R., Reid, R., et al. (2006). Could a single dose of pneumococcal conjugate vaccine in children be effective? Modeling the optimal age of vaccination. *Vaccine*, 24(7), 904-913.
18. Mintegi, S., Benito, J., Gonzalez, M., Astobiza, E., Sanchez, J., & Santiago, M. (2006). Impact of the pneumococcal conjugate vaccine in the management of highly febrile children aged 6 to 24 months in an emergency department. *Pediatric Emergency Care*, 22(8), 566-569.
19. Kaplan, S. L., Mason, E. O., Jr., Wald, E. R., Schutze, G. E., Bradley, J. S., Tan, T. Q., et al. (2004). Decrease of invasive pneumococcal infections in children among 8 children's hospitals in the United States after the introduction of the 7-valent pneumococcal conjugate vaccine. *Pediatrics*, 113(3), 443-449.
20. Whitney, C. G., Pilišvili, T., Farley, M. M., Schaffner, W., Craig, A. S., Lynfield, R., et al. (2006). Effectiveness of seven-valent pneumococcal conjugate vaccine against invasive pneumococcal disease: A matched case-control study (Clinical report). *The Lancet*, 368(9546):1495-502.
21. Greenes, D. S., & Harper, M. B. (1999). Low risk of bacteremia in febrile children with recognizable viral syndromes. *Pediatric Infectious Disease Journal*, 18(3), 258-261.
22. Rocholl, C., Gerber, K., Daly, J., Pavia, A. T., & Byington, C. L. (2004). Adenoviral infections in children: The impact of rapid diagnosis. *Pediatrics*, 113(1), e51-e56.
23. Vega, R. (2005). Rapid viral testing in the evaluation of the febrile infant and child. *Current Opinion in Pediatrics*, 17(3), 363-367.
24. Baraff, L. (2000). Management of fever without source in infants and children. *Annals of Emergency Medicine*, 36(6), 602-614.
25. Nigrovic, L., & Malley, R. (2004). Evaluation of the febrile child 3 to 36 months old in the era of pneumococcal conjugate vaccine: Focus on occult bacteremia. *Clinical Pediatric Emergency Medicine*, 5, 13-19.
26. Stalnikowicz, R., & Block, C. (2001). The yield of blood cultures in a department of emergency medicine. *European Journal of Emergency Medicine*, 8(2), 93-97.
27. Texas Children's Hospital Pathology On-line Lab Catalog. (2008). <http://intranet.tch.tmc.edu/catalog/pathcatalog.htm>
28. Hulten, K. G., Kaplan, S. L., Lamberth, L. B., Barson, W. J., Romero, J. R., Lin, P. L., et al. (2013). Changes in *streptococcus pneumoniae* serotype 19A invasive infections in children from 1993 to 2011. *Journal of Clinical Microbiology*, 51(4), 1294-1297.
29. Kaplan, S. L., Barson, W. J., Lin, P. L., Stovall, S. H., Bradley, J. S., Tan, T. Q. et al. (2010). Serotype 19A is the most common serotype causing invasive pneumococcal infection in children. *American Academy of Pediatrics*, 125(3), 429-436.
30. Bjornson, G., Scheifele, D. W., Bettinger, J., Patrick, D. M., Gustafson, L., Daly, P., et al. (2007). Effectiveness of pneumococcal conjugate vaccine in Greater Vancouver, Canada: 2004-2005. *Pediatric Infectious Disease Journal*, 26(6), 540-542.
31. Herz, A. M., Greenhow, T. L., Alcantara, J., Hansen, J., Baxter, R. P., Black, S. B., et al. (2006). Changing epidemiology of outpatient bacteremia in 3- to 36-month-old children after the introduction of the heptavalent-conjugated pneumococcal vaccine. *Pediatric Infectious Disease Journal*, 25(4), 293-300.
32. Messina, A. F., Katz-Gaynor, K. Barton, T., Ahmad, N., Ghaffar, F., Rasko, D., et al. (2007). Impact of the pneumococcal conjugate vaccine on serotype distribution and antimicrobial resistance of invasive *streptococcus pneumoniae* isolates in Dallas, TX, children from 1999 through 2005. *Pediatric Infectious Disease Journal* 26(6), 461-467.
33. Ritcher, S. S., Heilman, K. P., Dohrn, C. L., Riahi, F., Diekema, K. J., & Doem, G. V. (2013). Pneumococcal serotypes before and after introduction of conjugate vaccines, United States, 1999-2011. *Emerging Infectious Diseases*, 19(7), 1074-1083.
34. Sard, B., Bailey, M. C., & Vinci, R. (2006). An analysis of pediatric blood cultures in the postpneumococcal conjugate vaccine era in a community hospital emergency department. *Pediatric Emergency Care*, 22(5), 295-300.
35. Waddle, E., & Jhaveri, R. (2009). Outcomes of febrile children without localising signs after pneumococcal conjugate vaccine. *Archives of Disease in Childhood*, 94(2), 144-147.
36. Esposito, S., Lizioli, A., Lastrico, A., Begliatti, E., Rognoni, A., Tagliabue, C., et al. (2007). Impact on respiratory tract infections of heptavalent pneumococcal conjugate vaccine administered at 3, 5, and 11 months of age. *Respiratory Research*, 8(1), 12.

37. Park, S. Y., Beneden, C. A., Pilishvili, T., Martin, M., Facklam, R. R., Whitney, C. G. (2010). Invasive pneumococcal infections among vaccinated children in the United States. *Journal of Pediatrics*, 156(3), 478-483.
38. Vestrheim, D. F., Løvoll, Ø., Aaberge, I. S., Caugent, D. A., Høiby, E. A., Bakke, H., et al. (2008). Effectiveness of a 2+1 dose schedule pneumococcal conjugate vaccination programme on invasive pneumococcal disease among children in Norway. *Vaccine*, 26(26), 3277-3281.
39. Vestrheim, D. F., Høiby, E. A., Aaberge, I. S., & Caugant, D. A. (2010). Impact of a pneumococcal conjugate vaccination program on carriage among children in Norway. *Clinical and Vaccine Immunology*, 17(3), 325-334.
40. Bonsu, B., & Harper, M. (2003). Utility of the peripheral blood white blood cell count for identifying sick young infants who need lumbar puncture. *Annals of Emergency Medicine*, 41(2), 206-214.
41. Mintegi, S., Benito, J., Sanchez, J., Azkunaga, B., Iturralde, I., & Garcia, S. (2009). Predictors of occult bacteremia in young febrile children in the era of hexavalent pneumococcal conjugated vaccine. *European Journal of Medicine*, 16(4), 199-205.
42. Rudinsky, S. L., Carstairs, K. L., Reardon, J. M., Simon, L. V., Riffenburgh, R. H., & Tanen, D. A. (2009). Serious bacterial infections in febrile infants in the post-pneumococcal conjugate vaccine era. *Academic Emergency Medicine*, 16(7), 585-590.
43. Van den Bruel, A., Thompson, M. J., Haj-Hassan, T., Stevens, R., Moll, H., Lakhanpaul, M. et al. Diagnostic value of laboratory tests in identifying serious infections in febrile children: systematic review. *British Medical Journal*. 2011; 342:d3082.
44. Wilkinson, M., Bulloch, B., & Smith, M. (2008). Prevalence of occult bacteremia in children aged 3 to 36 months presenting to the emergency department with fever in the postpneumococcal conjugate vaccine era. *Academic Emergency Medicine*, 16(3), 220-225.
45. Benito-Fernández, J., Vazquez, M. A., Morteruel-Aizkuren, E., Mintegui-Raso, S., Sánchez-Etxaniz, J., & Fernandez-Landaluce, A. (2006). Impact of rapid viral testing for influenza A and B viruses on management of febrile infants without signs of focal infection. *Pediatric Infectious Disease Journal*, 25(12), 1153-1157.
46. Byington, C. L., Enriquez, R., Hoff, C., Tuohy, R., Taggart, E. W., Hillyard, D. R., et al. (2004). Serious bacterial infections in febrile infants 1 to 90 days old with and without viral infections. *Pediatrics*, 113(6), 1662-1666.
47. Colvin, J. M., Muenzer, J. T., Jaffe, D. M., Smason, A., Deych, E., Shannon, W. D. et al. (2012). Detection of viruses in young children with fever without an apparent source. *Pediatrics*, 130(6), e1455- e1462.
48. Lambert, S. B., Whiley, D. M., O'Neill, N. T., Andrews, E. D., Canavan, F. M., Bletchly, C., et al. (2008). Comparing nose-throat swabs and nasopharyngeal aspirates collected from children with symptoms for respiratory virus identification using real-time polymerase chain reaction. *Pediatrics*, 122(3), e615-e620.
49. Poehling, K. A., Zhu, Y., Tang, Y.-W., & Edwards, K. (2006). Accuracy and impact of a point-of-care rapid influenza test in young children with respiratory illnesses. *Archives of Pediatrics & Adolescent Medicine*, 160 (7), 713-718.
50. Smitherman, H. F., Caviness, A. C., & Macias, C. G. (2005). Retrospective review of serious bacterial infections in infants who are 0 to 36 months of age and have influenza A infection. *Pediatrics*, 115(3), 710-718.
51. Andreola, B., Bressan, S., Callegaro, S., Liverani, A., Plebani, M., & Da Dalt, L. (2007). Procalcitonin and C-reactive protein as diagnostic markers of severe bacterial infections in febrile infants and children in the emergency department. *Pediatric Infectious Disease Journal*, 26(8), 672-677.
52. Jones, A. E., Fiechtl, J. F., Brown, M. D., Ballew, J. J., & Kline, J. A. (2007). Procalcitonin test in the diagnosis of bacteremia: A meta-analysis. *Annals of Emergency Medicine*, 50 (1), 34-41.
53. Lacour, A. G., Zamora, S. A., & Gervaix, A. (2008). A score identifying serious bacterial infections in children with fever without source. *Pediatric Infectious Disease Journal*, 27(7), 654-656.
54. Luaces-Cubells, C., Mintegi, S., Garcia-Garcia, J., Astobiza, E., Garrido-Romero, R., Velasco-Rodriguez, J., et al. (2012). Procalcitonin to detect invasive bacterial infection in non-toxic-appearing infants with fever without apparent source in the emergency department. *Pediatric Infectious Disease Journal*, 31(6), 645-647.
55. Manzano, S., Bailey, B., Girodias, J., Galetto-Lacour, A., Cousineau, J., & Delvin, E. (2010). Impact of procalcitonin on the management of children aged 1 to 36 months presenting with fever without source: A randomized controlled trial. *American Journal of Emergency Medicine*, 28(6), 647-653
56. Manzano, S., Bailey, B., Gervaix, A., Cousineau, J., Delvin, E., & Girodias, J. B. (2011). Markers for bacterial infection in children with fever without source. *Archives of Disease in Childhood*, 96(5), 440-446.
57. Pratt, A., & Attia, M. W. (2007). Duration of fever and markers of serious bacterial infection in young febrile children. *Pediatrics International*, 49(1), 31-35.
58. Sanders, S., Barnett, A., Correa-Velez, I., Coulthard, M., & Doust, J. (2008). Systematic review of the diagnostic accuracy of c-reactive protein to detect bacterial infection in nonhospitalized infants and children with fever. *Journal of Pediatrics*, 153(4), 570-574.
59. Nohavicka, L., Ashdown, H. F., & Kelly, D. F. (2013). Determining immunisation status of children from history: A diagnostic accuracy study. *British Medical Journal*. 3(4). pii: e002822.
60. Bandyopadhyay, S., Bergholte, J., Blackwell, C. D., Friedlander, J. R., & Hennes, H. (2002). Risk of serious bacterial infection in children with fever without a source in the post-haemophilus influenzae era when antibiotics are reserved for culture-proven bacteremia. *Archives of Pediatrics & Adolescent Medicine*, 156(5), 512-517.
61. Baskin, M. N., O'Rourke, E. J., & Fleisher, G. R. (1992). Outpatient treatment of febrile infants 28 to 89 days of age with intramuscular administration of ceftriaxone. *Journal of Pediatrics*, 120(1), 22-27.

Clinical Standards Preparation

This clinical standard was prepared by the Evidence-Based Outcomes Center (EBOC) team in collaboration with content experts at Texas Children's Hospital. Development of this clinical standard supports the TCH Quality and Patient Safety Program initiative to promote clinical standards and outcomes that build a culture of quality and safety within the organization.

Fever Without Localizing Signs (2-36 Months) Content Expert Team

Aderonke Adekunle-Ojo, MD, Emergency Medicine
 Joseph Allen, MD, Emergency Medicine
 Kimberly Dinh, PharmD, Pharmacy
 Susan Engleman, RN, West Campus
 Leslie Harris, MD, Neonatology
 Lucila Marquez, MD, Hospital Medicine
 Almea Montillo, RN, Emergency Center
 Brent Mothner, MD, Hospital Medicine
 Elisa Mozley, Patient Services
 Debra Palazzi, MD, Infection Control
 Binita Patel, MD, Emergency Medicine
 Paula Revell, MD, Pathology
 Jamie Snow, CCLS, Social Work
 Michael Speer, MD, Neonatology
 Norma Terrazas, RN, Inpatient
 Irma Ugalde, MD, Emergency Medicine
 Andy Wei, MD, Texas Children's Pediatrics
 Elizabeth Wuestner, RN, Emergency Center

EBOC Team

Development Process

This clinical standard was developed using the process outlined in the EBOC Manual. The literature appraisal documents the following steps:

1. Review Preparation
 - PICO questions established
 - Evidence search confirmed with content experts
2. Review of Existing External Guidelines
 - Fever of Uncertain Source in 2-36 months of age, Cincinnati Children's Hospital Medical Center; Clinical Policy for Children Younger Than Three Years Presenting with Fever, American College of Emergency Physicians; Feverish Illness in Children: Assessment and Initial Management in Children Younger Than 5 Years, NICE Clinical Guideline
3. Literature Review of Relevant Evidence
 - Searched: Medline, Cochrane, AHRQ, CINAHL, Trip, Best BETS, AAP, BMJ Clinical Evidence, Google Scholar
4. Critically Analyze the Evidence
 - 1 meta-analysis, 2 systematic reviews, 2 randomized controlled trials, and 32 nonrandomized studies.
5. Summarize the Evidence
 - Materials used in the development of the clinical standard, literature appraisal, and any order sets are maintained in a Fever Without Localizing Signs (2-36 Months) evidence-based review manual within EBOC.

Evaluating the Quality of the Evidence

Published clinical guidelines were evaluated for this review using the **AGREE II** criteria. The summary of these guidelines are included in the literature appraisal. AGREE II criteria evaluate Guideline Scope and Purpose, Stakeholder Involvement, Rigor of Development, Clarity and Presentation, Applicability, and Editorial Independence using a 4-point Likert scale. The higher the score, the more comprehensive the guideline.

This clinical standard specifically summarizes the evidence *in support of* or *against* specific interventions and identifies where evidence is *lacking/inconclusive*. The following categories describe how research findings provide support for treatment interventions.

"Evidence Supports" provides evidence to support an intervention
"Evidence Against" provides evidence against an intervention.
"Evidence Lacking/Inconclusive" indicates there is insufficient evidence to support or refute an intervention and no conclusion can be drawn *from the evidence*.

The **GRADE** criteria were utilized to evaluate the body of evidence used to make practice recommendations. The table below defines how the quality of the evidence is rated and how a strong versus weak recommendation is established. The literature appraisal reflects the critical points of evidence.

Recommendation	
STRONG	Desirable effects clearly outweigh undesirable effects or vice versa
WEAK	Desirable effects closely balanced with undesirable effects
Quality	Type of Evidence
High	Consistent evidence from well-performed RCTs or exceptionally strong evidence from unbiased observational studies
Moderate	Evidence from RCTs with important limitations (e.g., inconsistent results, methodological flaws, indirect evidence, or imprecise results) or unusually strong evidence from unbiased observational studies
Low	Evidence for at least 1 critical outcome from observational studies, RCTs with serious flaws or indirect evidence
Very Low	Evidence for at least 1 critical outcome from unsystematic clinical observations or very indirect evidence

Recommendations

Practice recommendations were directed by the existing evidence and consensus amongst the content experts. Patient and family preferences were included when possible. The Content Expert Team and EBOC team remain aware of the controversies in the diagnosis/management of fever without localizing signs in children 2-36 months of age. When evidence is lacking, options in care are provided in the clinical standard and the accompanying order sets (if applicable).

Approval Process

Clinical standards are reviewed and approved by hospital committees as deemed appropriate for its intended use. Clinical standards are reviewed as necessary within EBOC at Texas Children's Hospital. Content Expert Teams are involved with every review and update.

Disclaimer

Practice recommendations are based upon the evidence available at the time the clinical standard was developed. Clinical standards (guidelines, summaries, or pathways) do not set out the standard of care and are not intended to be used to dictate a course of care. Each physician/practitioner should use his or her independent judgment in the management of any specific patient and is responsible, in consultation with the patient and/or the patient's family, to make the ultimate judgment regarding care.

Permission of Use

All content on this website is protected by copyright law. Unauthorized use, reproduction, or distribution of any part of this work is prohibited without written permission from Texas Children's Hospital. Please contact eboc@texaschildrens.org to obtain necessary permissions for usage of the materials on this website.

Version History

Date	Action	Comments
Mar 2009	Originally completed	
Aug 2013	Updated	
April 2021	Reaffirmed	