

TEXAS CHILDREN'S HOSPITAL
EVIDENCE-BASED OUTCOMES CENTER
Croup
Evidence-Based Guideline

Definition: Croup, also known as laryngotracheobronchitis, is a respiratory illness that results in inflammation and swelling of the upper airway. It is usually self-limiting, with symptom resolution within 48 hours (up to 1 week). ⁽¹⁾

Pathophysiology: Croup is most commonly caused by *Parainfluenza* virus. Other causes include respiratory syncytial virus, influenza A and B, *Mycoplasma pneumonia*, and other respiratory viruses. ⁽¹⁾

Inclusion Criteria ⁽¹⁻²⁾

- 6 months to 6 years
- Previously healthy

Exclusion Criteria ⁽¹⁾

- Toxic appearance
- Known upper airway abnormality (stridor at rest)
- Hypotonia
- Neuromuscular disorder

Differential Diagnosis ⁽²⁾

Bacterial tracheitis
Epiglottitis
Foreign body
Retropharyngeal abscess
Hereditary angioedema
Congenital abnormality
Anaphylaxis
Laryngomalacia
Tracheomalacia

Diagnostic Evaluation ⁽¹⁻²⁾

Croup occurs primarily in late fall to early winter but can occur year-round.

History: Assess for

- With or without antecedent upper respiratory symptoms of cough, rhinorrhea, fever
- Abrupt onset
- Symptoms worse at night
- Symptoms worse with agitation

Physical Examination

Complete routine vital signs including blood pressure

Assess for:

- Barky cough
- Hoarseness
- No to moderately high fever
- Irritability
- Inspiratory stridor
- Chest wall indrawing of varying severity
- Absence of drooling
- Non-toxic appearance
- Tachypnea
- Ability to talk or feed
- Retractions
- Mental status

Critical Points of Evidence*

Evidence Supports

- Administer PO dexamethasone 0.3 mg/kg to all patients with croup. If the patient is unable to tolerate oral administration, give IM dexamethasone instead. ^(1-2,3-17) – Strong recommendation, moderate quality evidence
- Give inhaled racemic epinephrine if the patient has stridor at rest. ^(1-2,18-23) – Strong recommendation, moderate quality evidence
- Observe the patient for 2 hours after epinephrine administration. ⁽¹⁻²⁾ – Strong recommendation, very low quality evidence
- Admit patients who require supplemental oxygen. ⁽²⁴⁾ – Strong recommendation, very low quality evidence

Evidence Against

- Do not routinely use mist therapy for the treatment of croup. ^(1-2,25,26) – Strong recommendation, moderate quality evidence
- Do not routinely use heliox for the treatment of croup. ^(2,27-30) – Strong recommendation with low quality evidence
- Do not routinely use viral testing or laboratory assessments. ^(1-2,31) – Strong recommendation, very low quality evidence

Evidence Lacking/Inconclusive

- Adopt the Alberta guideline's severity scoring guidance. ⁽²⁾ – Consensus recommendation
- Do not routinely use chest radiographs upon initial presentation to determine diagnosis and/or level of severity. ⁽¹⁻²⁾ – Consensus recommendation
- Re-dose nebulized racemic epinephrine as needed every 2 hours with ongoing MD evaluation. Consider RRT/escalation of care if epinephrine is needed more frequently than every 2 hours and/or the patient has worsening hypoxia or respiratory distress. ⁽¹⁻²⁾ – Consensus recommendation
- Admit patients who have received ≥ 3 doses of racemic epinephrine, patients who are unable to tolerate PO, and patients in significant respiratory distress. ⁽¹⁻²⁾ – Consensus recommendation
- Discharge patients not meeting admission criteria and to advise parents when to return for care, i.e., patient has increasing respiratory distress and/or stridor at rest. ⁽¹⁻²⁾ – Consensus recommendation

*NOTE: The references cited represent the entire body of evidence reviewed to make each recommendation.

Condition-Specific Elements of Clinical Management

Admission Criteria

- Significant respiratory distress
- ≥3 doses of racemic epinephrine administered
- Unable to tolerate PO
- Supplemental O₂ requirement

Discharge Criteria

- No stridor at rest
- No significant respiratory distress
- No supplemental O₂ requirement
- No symptom recurrence 2 hours after racemic epinephrine administration

Consults/Referrals

Consult ENT if the patient fails to respond to the 2nd dose of dexamethasone or if there is increased concern for alternate diagnosis

Measures

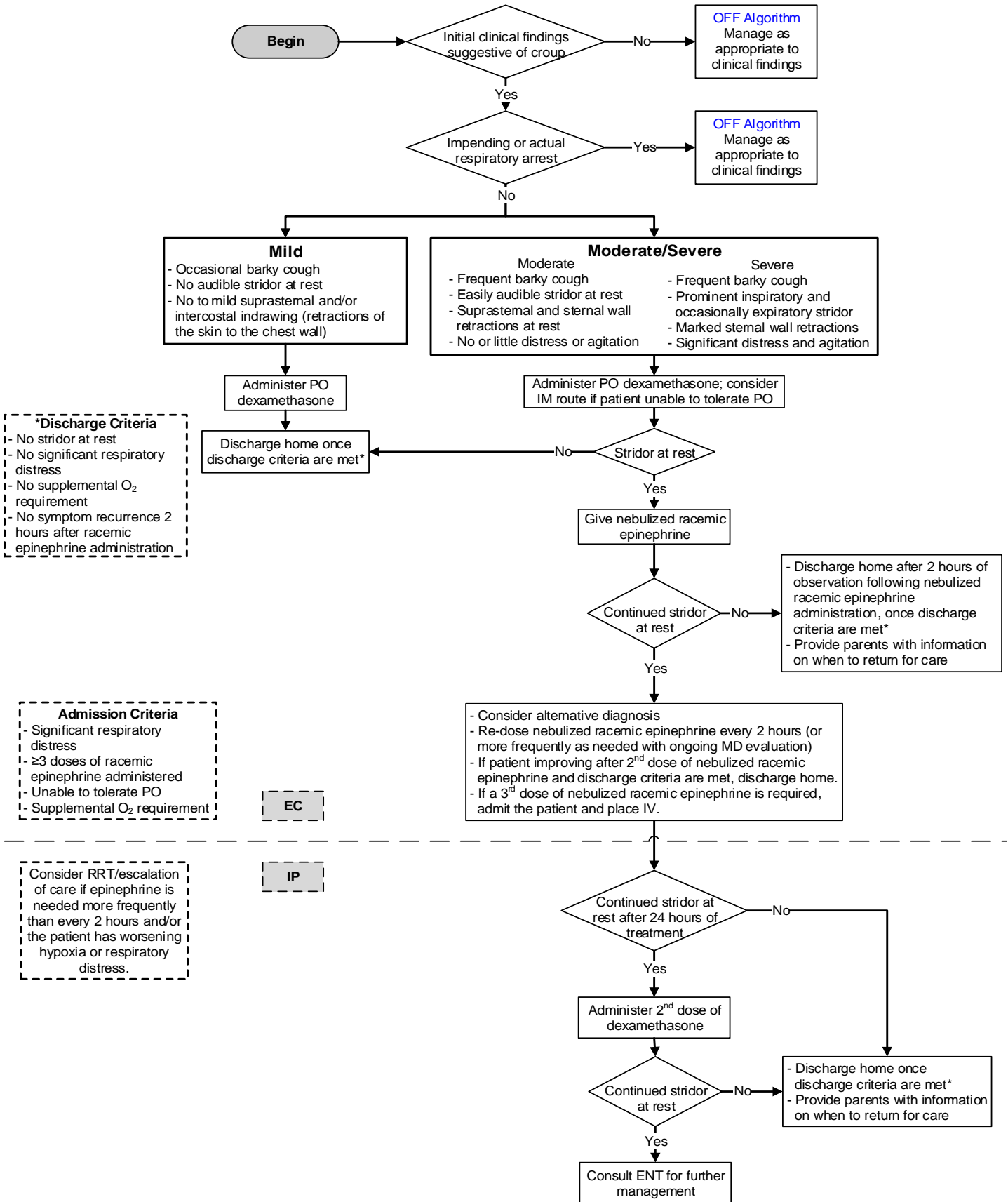
Process

- Order set utilization rate
- Proportion of patients with a chest x-ray obtained
- Proportion of patients with any imaging study obtained
- Proportion of patients with viral studies obtained
- Median time to first dose of racemic epinephrine
- Proportion of patients receiving racemic epinephrine (EC, IP)
- Median time to first dose of dexamethasone
- Proportion of patients receiving a 2nd dose of dexamethasone
- Proportion of patients with an ENT consult

Outcome

- Inpatient length of stay
- Admission rate
- Readmission rate

TCH Evidence-Based Outcomes Center Clinical Algorithm for Croup



References

1. Seattle Children's Hospital. (2011). Croup.
2. TOP: Toward Optimized Practice (Alberta). (2008). Diagnosis and management of croup.
3. Amir, L., Hubermann, H., Halevi, A., Mor, M., Mimouni, M., & Waisman, Y. (2006). Oral betamethasone versus intramuscular dexamethasone for the treatment of mild to moderate viral croup: A prospective, randomized trial. *Pediatric Emergency Care*, 22(8), 541-544.
4. Chub-Uppakarn, S., & Sangsupawanich, P. (2007). A randomized comparison of dexamethasone 0.15 mg/kg versus 0.6 mg/kg for the treatment of moderate to severe croup. *International Journal of Pediatric Otorhinolaryngology*, 71(3), 473-477.
5. Dobrovoljac, M., & Geelhoed, G. C. (2012). How fast does oral dexamethasone work in mild to moderately severe croup? A randomized double-blinded clinical trial. *Emergency Medicine Australasia*, 24(1), 79-85.
6. Fifoot, A. A., & Ting, J. Y. (2007). Comparison between single-dose oral prednisolone and oral dexamethasone in the treatment of croup: A randomized, double-blinded clinical trial. *Emergency Medicine Australasia*, 19(1), 51-58.
7. Garbutt, J. M., Conlon, B., Sterkel, R., Baty, J., Schechtman, K. B., Mandrell, K., et al. (2013). The comparative effectiveness of prednisolone and dexamethasone for children with croup: A community-based randomized trial. *Clinical Pediatrics*, 52(11), 1014-1021.
8. Geelhoed, G. C., & Macdonald, W. B. (1995). Oral dexamethasone in the treatment of croup: 0.15 mg/kg versus 0.3 mg/kg versus 0.6 mg/kg. *Pediatric Pulmonology*, 20(6), 362-368.
9. Geelhoed, G. C., Turner, J., & Macdonald, W. B. (1996). Efficacy of a small single dose of oral dexamethasone for outpatient croup: A double blind placebo controlled clinical trial. *BMJ*, 313(7050), 140-142.
10. Geelhoed, G. C. (2005). Budesonide offers no advantage when added to oral dexamethasone in the treatment of croup. *Pediatric Emergency Care*, 21(6), 359-362.
11. Harel, L., Prais, D., Bar-On, E., Livni, G., Hoffer, V., Uziel, Y., & Amir, J. (2011). Dexamethasone therapy for septic arthritis in children: Results of a randomized double-blind placebo-controlled study. *Journal of Pediatric Orthopaedics*, 31(2), 211-215.
12. Kaan, M. N., Odabasi, O., Gezer, E., & Daldal, A. (2006). The effect of preoperative dexamethasone on early oral intake, vomiting and pain after tonsillectomy. *International Journal of Pediatric Otorhinolaryngology*, 70(1), 73-79.
13. Kairys, S. W., Olmstead, E. M., & O'Connor, G. T. (1989). Steroid treatment of laryngotracheitis: A meta-analysis of the evidence from randomized trials. *Pediatrics*, 83(5), 683-693.
14. Karaman, M., Ilhan, A. E., Dereci, G., & Tek, A. (2009). Determination of optimum dosage of intraoperative single dose dexamethasone in pediatric tonsillectomy and adenotonsillectomy. *International Journal of Pediatric Otorhinolaryngology*, 73(11), 1513-1515.
15. Klassen, T. P., Craig, W. R., Moher, D., & et al. (1998). Nebulized budesonide and oral dexamethasone for treatment of croup: A randomized controlled trial. *JAMA*, 279(20), 1629-1632.
16. Russell, K., Wiebe, N., Saenz, A., Ausejo, S. M., Johnson, D., Hartling, L., & Klassen, T. P. (2004). Glucocorticoids for croup. *Cochrane Database of Systematic Reviews*, 2004(1), CD001955.
17. Sparrow, A., & Geelhoed, G. (2006). Prednisolone versus dexamethasone in croup: A randomised equivalence trial. *Archives of Disease in Childhood*, 91(7), 580-583.
18. Argent, A. C., Hatherill, M., Newth, C. J., & Klein, M. (2008). The effect of epinephrine by nebulization on measures of airway obstruction in patients with acute severe croup. *Intensive Care Medicine*, 34(1), 138-147.
19. Bjornson, C., Russell, K., Vandermeer, B., Klassen, T. P., & Johnson, D. W. (2013). Nebulized epinephrine for croup in children. *Cochrane Database of Systematic Reviews*, 2013(10), CD006619.
20. Kelley, P. B., & Simon, J. E. (1992). Racemic epinephrine use in croup and disposition. *American Journal of Emergency Medicine*, 10(3), 181-183.
21. Ledwith, C. A., Shea, L. M., & Mauro, R. D. (1995). Safety and efficacy of nebulized racemic epinephrine in conjunction with oral dexamethasone and mist in the outpatient treatment of croup. *Annals of Emergency Medicine*, 25(3), 331-337.
22. Prendergast, M., Jones, J. S., & Hartman, D. (1994). Racemic epinephrine in the treatment of laryngotracheitis: Can we identify children for outpatient therapy? *American Journal of Emergency Medicine*, 12(6), 613-616.
23. Rizos, J. D., DiGravio, B. E., Sehl, M. J., & Tallon, J. M. (1998). The disposition of children with croup treated with racemic epinephrine and dexamethasone in the emergency department. *Journal of Emergency Medicine*, 16(4), 535-539.
24. Narayanan, S., & Funkhouser, E. (2014). Inpatient hospitalizations for croup. *Hospital Pediatrics*, 4(2), 88-92.
25. Moore, M., & Little, P. (2006). Humidified air inhalation for treating croup. *Cochrane Database of Systematic Reviews*, 2006(3), CD002870.
26. Scolnik, D., Coates, A. L., Stephens, D., Da Silva, Z., Lavine, E., & Schuh, S. (2006). Controlled delivery of high vs low humidity vs mist therapy for croup in emergency departments: A randomized controlled trial. *JAMA*, 295(11), 1274-1280.
27. Moraa, I., Sturman, N., McGuire, T., & van Driel, M. L. (2013). Heliox for croup in children. *Cochrane Database of Systematic Reviews*, 2013(12), CD006822.
28. Pardillo, M. R., Citores, A. P., Navarro, C.M., Soler, M. G., & Lopez, V. P. (2009). Heliox as mild treatment for croup. *Acta Pediatrica Española* 67(9):432-434.
29. Terregino, C. A., Nairn, S. J., Chansky, M. E., & Kass, J. E. (1998). The effect of heliox on croup: A pilot study. *Academic Emergency Medicine*, 5(11), 1130-1133.
30. Weber, J. E., Chudnofsky, C. R., Younger, J. G., Larkin, G. L., Boczar, M., Wilkerson, M. D., et al. (2001). A randomized comparison of helium-oxygen mixture (Heliox) and racemic epinephrine for the treatment of moderate to severe croup. *Pediatrics*, 107(6), E96.
31. Wall, S. R., Wat, D., Spiller, O. B., Gelder, C. M., Kotecha, S., & Doull, I. J. (2009). The viral aetiology of croup and recurrent croup. *Archives of Disease in Childhood*, 94(5), 359-360.

Clinical Standards Preparation

This clinical standard was prepared by the Evidence-Based Outcomes Center (EBOC) team in collaboration with content experts at Texas Children’s Hospital. Development of this clinical standard supports the TCH Quality and Patient Safety Program initiative to promote clinical standards and outcomes that build a culture of quality and safety within the organization.

Croup Content Expert Team

Daniel Chelius, MD, Otolaryngology
 Melissa Chladek, MD, Pediatric Hospital Medicine
 Lindsay Day, MD, Emergency Medicine
 Mindy Fein, MD, Emergency Medicine
 Lacherie Green, BSN, RN, Inpatient Nursing
 Julia Lawrence, RT, Respiratory Care
 Surin Lee, PharmD, Pharmacy
 Brent Mothner, MD, Pediatric Hospital Medicine
 Purva Patel, MD, Pediatric Hospital Medicine
 Krista Preisberga, MD, Pediatric Hospital Medicine
 Matthew Wilber, MD, Texas Children’s Pediatric Associates

EBOC Team

No relevant financial or intellectual conflicts to report.

Development Process

This clinical standard was developed using the process outlined in the EBOC Manual. The literature appraisal documents the following steps:

1. Review Preparation
 - PICO questions established
 - Evidence search confirmed with content experts
2. Review of Existing External Guidelines
 - Toward Optimized Practice (TOP; Alberta): Diagnosis and Management of Croup (January 2008), Seattle Children’s Hospital: Croup (December 2011)
3. Literature Review of Relevant Evidence
 - Searched: Pubmed, Cochrane, Google
4. Critically Analyze the Evidence
 - 4 meta-analyses, 1 systematic review, 17 randomized controlled trials, and 7 nonrandomized studies
5. Summarize the Evidence
 - Materials used in the development of the clinical standard, literature appraisal, and any order sets are maintained in a Croup evidence-based review manual within EBOC.

Evaluating the Quality of the Evidence

Published clinical guidelines were evaluated for this review using the **AGREE II** criteria. The summary of these guidelines are included in the literature appraisal. AGREE II criteria evaluate Guideline Scope and Purpose, Stakeholder Involvement, Rigor of Development, Clarity and Presentation, Applicability, and Editorial Independence using a 4-point Likert scale. The higher the score, the more comprehensive the guideline.

This clinical standard specifically summarizes the evidence *in support of* or *against* specific interventions and identifies where evidence is *lacking/inconclusive*. The following categories describe how research findings provide support for treatment interventions. **“Evidence Supports”** provides evidence to support an intervention. **“Evidence Against”** provides evidence against an intervention. **“Evidence Lacking/Inconclusive”** indicates there is insufficient evidence to support or refute an intervention and no conclusion can be drawn *from the evidence*.

The **GRADE** criteria were utilized to evaluate the body of evidence used to make practice recommendations. The table below defines how the quality of the evidence is rated and how a strong versus weak recommendation is established. The literature appraisal reflects the critical points of evidence.

Recommendation	
STRONG	Desirable effects clearly outweigh undesirable effects or vice versa
WEAK	Desirable effects closely balanced with undesirable effects
Quality	Type of Evidence
High	Consistent evidence from well-performed RCTs or exceptionally strong evidence from unbiased observational studies
Moderate	Evidence from RCTs with important limitations (e.g., inconsistent results, methodological flaws, indirect evidence, or imprecise results) or unusually strong evidence from unbiased observational studies
Low	Evidence for at least 1 critical outcome from observational studies, RCTs with serious flaws or indirect evidence
Very Low	Evidence for at least 1 critical outcome from unsystematic clinical observations or very indirect evidence

Recommendations

Practice recommendations were directed by the existing evidence and consensus amongst the content experts. Patient and family preferences were included when possible. The Content Expert Team and EBOC team remain aware of the controversies in the diagnosis/management of Croup in children. When evidence is lacking, options in care are provided in the clinical standard and the accompanying order sets (if applicable).

Approval Process

Clinical standards are reviewed and approved by hospital committees as deemed appropriate for its intended use. Clinical standards are reviewed as necessary within EBOC at Texas Children’s Hospital. Content Expert Teams are involved with every review and update.

Disclaimer

Practice recommendations are based upon the evidence available at the time the clinical standard was developed. Clinical standards (guidelines, summaries, or pathways) do not set out the standard of care and are not intended to be used to dictate a course of care. Each physician/practitioner should use his or her independent judgment in the management of any specific patient and is responsible, in consultation with the patient and/or the patient’s family, to make the ultimate judgment regarding care.

Permission of Use

All content on this website is protected by copyright law. Unauthorized use, reproduction, or distribution of any part of this work is prohibited without written permission from Texas Children’s Hospital. Please contact eboc@texaschildrens.org to obtain necessary permissions for usage of the materials on this website.

Version History

Date	Action	Comments
Mar 2016	Originally completed	
Aug 2021	Reaffirmed	