

BAYLOR FOUNDATION



LESOTHO

PUBLICATION DATE

November 2024

PREPARED BY

Dr. Mamello Sekese – Technical Director

COLLABORATORS

Dr. Seema Ntjabane – Chief of Party (KB)

Dr. Mosa Molapo Hlasoa – Project Director (LEADR, CoHip-SEC)

Mrs. Mafusi Boopa – Projects Manager (ALPEC, PINCH, PROTECT)

Mrs. Mamothello Motsamai – Project Coordinator (PROTECT)

Dr. Hlompho Phasumane - Adolescent Program Lead

Mr. Thabo Motseki – Psychosocial Support Coordinator

Mr. Pheello Mothepu – Monitoring and Evaluation Coordinator

APPROVED BY

Dr. Lineo Thahane – Executive Director

PHOTO CREDIT

Smiley N. Pool

TABLE CONTENTS

04

Thank You

05

Acronyms

06

Annual Report Indicators and Definitions for the Global Health Network

08

Foundation Background

09

MISSION

09

VISION

09

VALUES

10

Executive Director Message

11

Areas of Operation

13

Program Highlights

14

Centre of Excellence and Satellites

16

Karabo ea Bophelo (KB)

17

Local Entities Advancing and Driving Health Responses (LEADR)

18

Accelerating Lesotho's Progress to Epidemic Control (ALPEC)

19

Comprehensive High Impact Community-Based HIV Prevention

22

Additional Projects

22

Adolescent Program

23

Success Story

THANK YOU



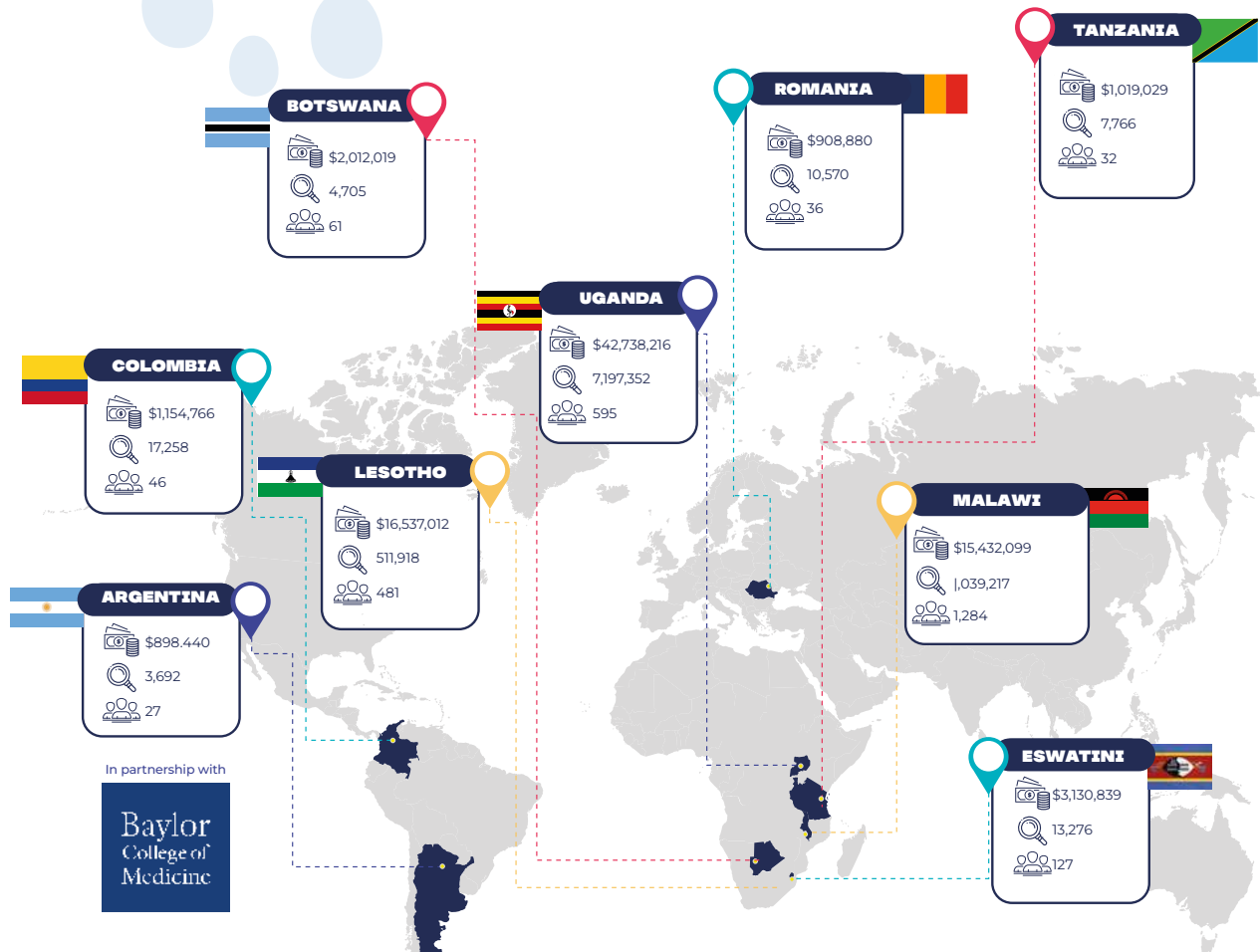
ELIZABETH GLASER
PEDIATRIC AIDS
FOUNDATION



ACRONYMS

AGYW	● —	Adolescent Girls and Young Women
ALPEC	● —	Accelerating Lesotho's Progress to Epidemic Control
C19RM	● —	COVID 19 Response Mechanism
CDC	● —	Centers for Disease Control and Prevention
CoHIP SEC	● —	Comprehensive High Impact Community-Based HIV Prevention, Testing and Treatment Initiation for Sustained Epidemic Control in Lesotho
DREAMS	● —	Determined, Resilient, Empowered, AIDS Free, Mentored, Safe
ETHICS	● —	Expanding TB and HIV Clinical Services
KB	● —	Karabo ea Bophelo
LEADR	● —	Local Entities Advancing and Driving Health Responses
MoF-PMU	● —	Ministry of Finance- Project Management Unit
MoGYSACSD	● —	Ministry of Gender, Youth, Sports, Arts, Culture, and Social Development
MoSD	● —	Ministry of Social Development
OVC	● —	Orphans and Vulnerable Children
PEP	● —	Post Exposure Prophylaxis
PINCH	● —	Protecting Women, Infants and Children from HIV in Lesotho
PLHIV	● —	People living with HIV
PrEP	● —	Pre-Exposure Prophylaxis
PROTECT	● —	Providing Prevention and Treatment for Young People
SSI	● —	Sebatso Social Incubators
TB	● —	Tuberculosis
TB GAPS	● —	TB Guidance for Adaptable Patient-Centered Service
USAID	● —	United States Agency for International Development

NETWORK IMPACT AT A GLANCE



PEOPLE REACHED

511,918

173,218

Children
Reached

209,726

Women Reached

76,929

Patients Receiving
ART

14,797

**WOMEN RECEIVING
PRENATAL SCREENINGS**

7,533

Women Receiving Cervical
Cancer Screenings

1,156

Health Work Force
Personnel Trained

5,413

Number of active patients at COEs,
satellites and outreach sites

18,141

Total number of patients ever
enrolled at COEs, satellites and
outreach sites

FOUNDATION BACKGROUND



Baylor College of Medicine Children's Foundation Lesotho (Baylor Foundation Lesotho) was formed and registered in 2005 as a local non-governmental organization as a result of a partnership between the Baylor College of Medicine International Pediatric AIDS Initiative (BIPAI) in Houston, Texas, USA and the Lesotho Ministry of Health. BIPAI is now known as the Texas Children's Global Health Network, reflecting its expanded commitment to improving pediatric and maternal health globally. The Bristol Myers-Squibb Foundation's Secure the Future initiative donated the initial funds to construct and equip Baylor Foundation Lesotho's first health facility, which His Majesty King Letsie III inaugurated on December 1, 2005, World AIDS Day.

Baylor Foundation Lesotho operates its Children's Clinical Centre of Excellence (COE) in Maseru, the capital city of Lesotho, as well as Satellite Clinical Centres of Excellence in five of the 10 districts, namely: Qacha's Nek, Mophale's Hoek, Leribe, Butha-Buthe, and Mokhotlong. In 2012, we launched an adolescent clinic specifically for those 14 – 20 years of age, which was hosted on Queen 'Mamohato Memorial Hospital's premises until June 2024. The basic operations of all the centres are funded by the Government of Lesotho through the Ministry of Health. Since its inception in December 2005, Baylor Foundation Lesotho has seen enormous growth in every area of its operations.

The services offered have expanded from pediatric and adolescent HIV testing, prevention, care, and treatment to include other support services, including outreach and psychosocial support services; tuberculosis (TB) screening, diagnosis and care; adult HIV services, including testing, care and treatment, Post Exposure Prophylaxis and Pre-Exposure Prophylaxis (PEP, and PrEP), and cervical cancer screening; holistic support for Orphans and Vulnerable Children (OVC); education support; and economic strengthening. Furthermore, we offer services in all districts, including those in which we do not have clinical sites, through donor-funded projects. Baylor Foundation Lesotho has expanded remarkably through donor funded projects such as ETHICS, LEADR and KB (USAID); CoHIP-SEC, ALPEC, and TB GAPS (CDC); PROTECT and PINCH (Global Fund).



MISSION

To provide high-quality, high-impact, highly ethical pediatric and family-centered healthcare, health professional training, and clinical research focused on HIV/AIDS, tuberculosis, malaria, malnutrition, and other conditions impacting the health and wellbeing of children and families worldwide.

VISION

To ensure universal access to care, treatment and support services for all HIV-infected and affected children and their families throughout Lesotho; support prevention of new infections; and equip healthcare providers with knowledge and skills to manage common pediatric illnesses.

VALUES

Personal integrity and accountability, client-centered approach, respectful service delivery, compassionate and confidential services, organizational accountability for operational excellence, client and partner satisfaction, employee and organization development, financial health, and infrastructure maintenance




EXECUTIVE DIRECTOR

Lineo K. Thahane, M.D.

This year marks a significant period of transition for Baylor Foundation Lesotho. It is the final full year of implementation for the USAID-funded Karabo ea Bophelo (KB) project, a groundbreaking five-year initiative that has delivered holistic, community-based HIV prevention and support services to orphans and vulnerable children (OVC) and adolescent girls and young women (AGYW) across Lesotho. KB has not only provided tangible support to hundreds of thousands of beneficiaries, it has also positioned the Foundation as a recognized leader in community-based service delivery, particularly in OVC and DREAMS programming.

As we prepare to hand over this important work to the next implementing partner, we look ahead with clarity and renewed purpose. The KB project has taught us valuable lessons, and as we evolve, we remain focused on sustaining our impact, expanding our project portfolio, and ensuring financial sustainability.

One of our greatest achievements this year was the successful renewal of our Memorandum of Understanding (MOU) with the Government of Lesotho, along with the signing of a new five-year grant agreement supporting service delivery at our Center of Excellence (COE) and Satellite Centers of Excellence (SCOEs). These developments reaffirm our role as a trusted implementing and technical assistance partner to the Ministry of Health. The renewal reflects the government's ongoing confidence in our high-quality, transparent, and impactful service delivery, and underscores the enduring strength of our public-private partnership.



Baylor Foundation Lesotho continues to distinguish itself through its unwavering commitment to high-quality, evidence-based, and client-centered care. Children remain our key entry point to services, and our teams of skilled professionals combine deep technical expertise with compassionate care. Every patient we serve receives respectful, personalized support that aligns with both global best practices and Ministry of Health standards.

In response to an ever-changing operating environment, the Foundation has remained agile, strengthening collaboration and embracing innovation to improve service delivery. We actively engage with the Ministry of Health to remain aligned with national priorities and adapt our strategies accordingly. Our involvement in the development of Lesotho's National HIV/TB Sustainability Roadmap and participation in key Ministry Technical Working Groups ensures we remain at the forefront of national health conversations. We also continue to cultivate partnerships that share our mission, helping us scale our impact and extend the reach of our services.

Looking ahead, we are committed to embracing forward-thinking approaches that will fuel continued growth and relevance. As Lesotho moves closer to achieving HIV Epidemic Control, our role will expand to meet new challenges such as child health, nutrition and food insecurity, non-communicable diseases (including cancer), and mental health. We will strengthen our technical capacity in these areas and continue to support the Ministry of Health in addressing these critical issues.

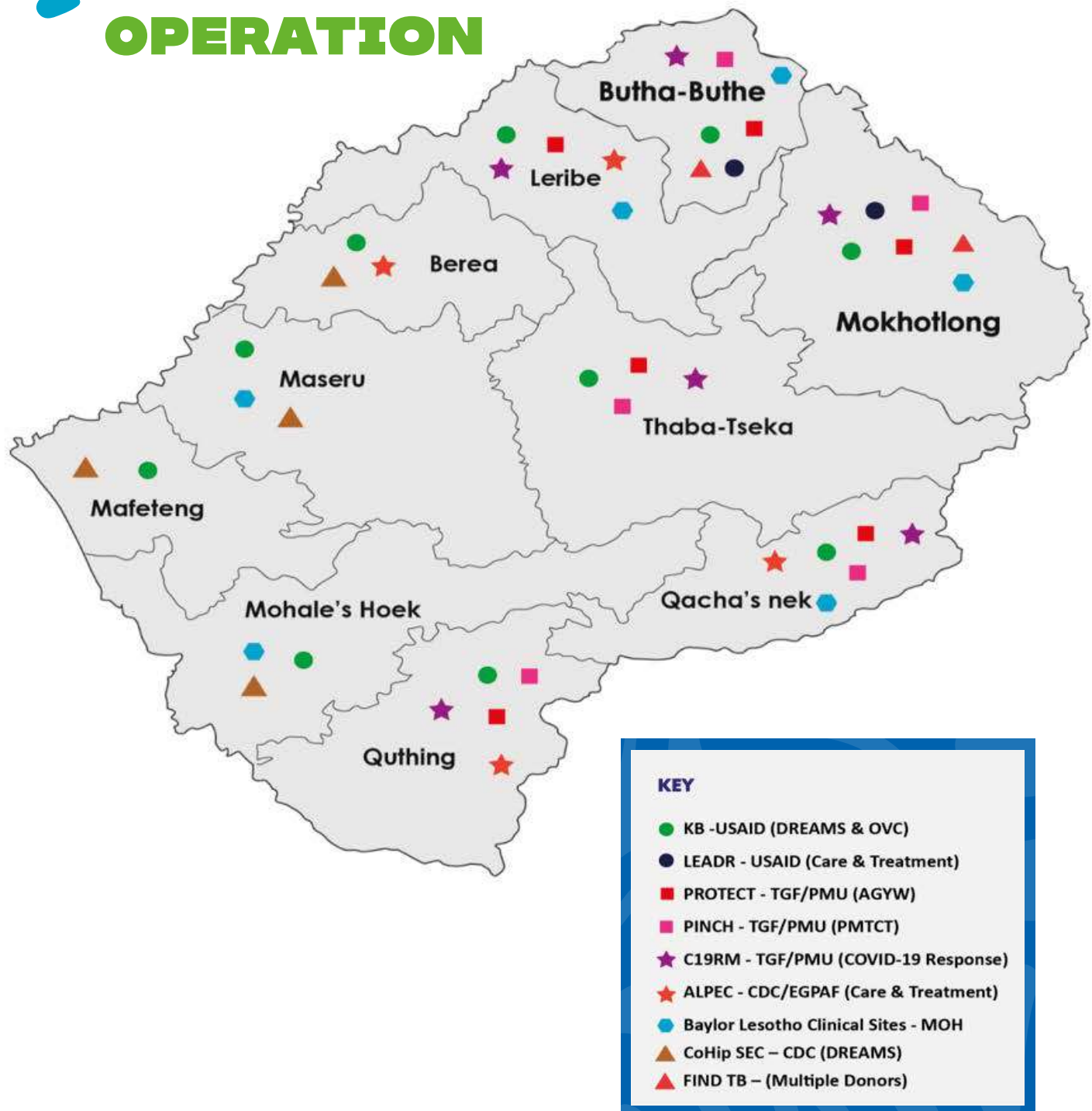
We are actively pursuing new funding opportunities and strategic partnerships to bolster our work and secure long-term sustainability. At the same time, we remain dedicated to our core mission: supporting families affected by HIV, TB, and related conditions through quality service, innovation, and compassion.

With a spirit of optimism and determination, we look forward to a year of impactful growth and transformative change.

Warm regards,
Lineo K. Thahane, M.D.
Baylor Foundation Lesotho

LESOTHO

AREAS OF OPERATION



PROGRAM HIGHLIGHTS



Karabo ea Bophelo	84,975 of beneficiaries served by KB OVC program for children and families affected by HIV/AIDS
	25,237 AGYW reached with HIV Prevention and Risk reduction services
	179 AGYW engaged in comprehensive economic strengthening activities
	15,668 of individuals completing an intervention pertaining to gender norms within the context of HIV/AIDS that meets minimum criteria
PROTECT	3,371 AGYW received Family planning services
	100% of newly identified AGYW were initiated on ART
	9,826 HIVST distributed to AGYW
PINCH	675 infants were reached with EID in <2month
	892 exposed infants had final outcomes documented
ALPEC	1,434 new and replaced TB cases identified
	41,734 distribution of HIVST
LEADR	3,078 general population and breastfeeding women reached with PrEP
	95% viral load suppression among children (0-14yrs)
	17,708 reached with HIV testing services
CoHIP SEC	60,477 Clients reached with HIV messaging and HIVST
	79 women reached with cervical cancer screening
	59,411 Reached with HIV testing services
COE/SCOE	18,974 ever enrolled in care
	19,985 screened for TB
	523 screened for cervical cancer

PROGRAM HIGHLIGHTS

CENTRE OF EXCELLENCE AND SATELLITES

Baylor Foundation Lesotho has been funded through a Ministry of Health subvention since 2005; however, the support agreement was changed to a Grant agreement on the 01st April 2024, which is anticipated to end in March 2029. The primary goal of the Centre of Excellence and Satellites is to provide high-quality, high-impact, highly ethical pediatric and family-centered HIV and TB services.

Objectives of the MoH Grant

- **Objective 1:** Provide high quality pediatric HIV care and treatment services through the COE and SCOE to pediatric patients
- **Objective 2:** Provide expertise, mentoring and training in clinical services adjacent to and beyond HIV.
- **Objective 3:** Develop a sustainability strategy for the Baylor approach that will allow pediatric care and treatment to be mainstreamed within all facilities in Lesotho by 2029.
- **Objective 4:** Provide clear and concise technical and financial reporting on the subvention.

The services offered are outlined in the graphic below:



KARABO EA BOPHELO (KB)

Baylor Foundation Lesotho KB is a five-year program funded by the U.S. Agency for International Development (USAID), with planned implementation from October 1, 2019, to September 30, 2024. Its main aim is to support the Government of Lesotho to expand access to and uptake of multi-sectoral interventions across all ten districts to prevent new HIV infections and reduce vulnerability among Orphans and Vulnerable Children (OVC) and Adolescent Girls and Young Women (AGYW). The Foundation implements the program in collaboration with six partner organizations, namely, Catholic Relief Services (CRS), Lesotho Network of People Living with HIV & AIDS (LENEPWHA), Centre for Impacting Lives (CIL), Lesotho Inter-Religious AIDS Consortium (LIRAC), Society for Women and AIDS in Africa Lesotho (SWAALES) and Care for Basotho Association (CBA).

Objectives of the KB program are:

1. To enhance capacity of families and communities to support OVC.
2. To increase uptake of health, HIV prevention, care and treatment services among OVC and AGYW.
3. To reduce sexual violence and GBV amongst OVC and AGYW
4. To enhance utilization of a HIV-sensitive National Case Management System; and
5. To upscale demand for COVID-19 Vaccination



LOCAL ENTITIES ADVANCING AND DRIVING HEALTH RESPONSES (LEADR)

Baylor Foundation Lesotho was granted a Fixed Amount Award to implement the Local Entities Advancing and Driving Health Responses (LEADR) project in the two districts of Butha Buthe and Mokhotlong and the Baylor Foundation Lesotho COE in Maseru and SCOE in Mohale's Hoek. The LEADR Project, a three-year award, was initiated on April 24th, 2023, with Lesotho Network of AIDS Services Organizations (LENASO) as a subrecipient to Baylor Foundation Lesotho in the project.



Project goal: To support the goal to deliver high-quality integrated prevention, care and treatment services that will sustain the reduction in HIV, TB, and COVID-19 transmission, morbidity, and mortality in Lesotho through the implementation of a comprehensive, person-centered approach in the Butha-Buthe and Mokhotlong districts of Lesotho.

Project Objectives:

- **Result 1:** Increased coverage of high-quality evidence-informed comprehensive and people-centered HIV and TB prevention, diagnosis, care and treatment services
- **Result 2:** Increased access and uptake of quality prevention, detection, vaccination and clinical services to mitigate the impact and reduce transmission of emerging public health pandemics, including COVID-19
- **Result 3:** Strengthened district and community health systems using a primary health care approach to sustain epidemic control of HIV, TB, and other infectious diseases beyond activity implementation.

ACCELERATING LESOTHO'S PROGRESS TO EPIDEMIC CONTROL (ALPEC)



This is a five-year program funded by the President's Emergency Plan for AIDS Relief (PEPFAR), under which Baylor Foundation Lesotho is a sub-recipient to Elizabeth Glaser Pediatric AIDS Foundation (EGPAF). This program is a follow-on to the previously described STAR-L program and is currently in its third year of implementation. The ALPEC program started in January 2021 and will end in September 2025. The project is being implemented in the four districts of Leribe, Berea, Quthing and Qacha's Nek. Baylor Foundation Lesotho contributes towards the following objectives:

- Expanding HIV case identification through a mix of targeted approaches for different priority populations and linking them for same-day ART initiation,
- Expanding recent infection surveillance systems at all supported HIV testing sites,
- Expansion of differentiated models of care for stable and unstable patients to improve retention, adherence to ART, and clinical outcomes,
- Expanded TB case identification and treatment, and increased uptake of TPT for all eligible PLHIV.
- Expansion of biomedical prevention services, specifically PMTCT and PrEP
- Strengthened technical and management capacity of MOH district level services and facilities to implement and monitor quality of the HIV response across the continuum of care.

COMPREHENSIVE HIGH IMPACT COMMUNITY-BASED HIV PREVENTION, TESTING AND TREATMENT INITIATION FOR SUSTAINED EPIDEMIC CONTROL IN LESOTHO (COHIP-SEC)

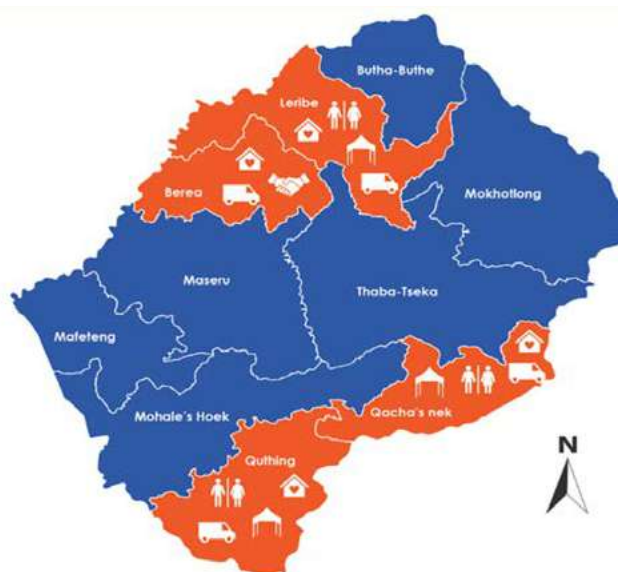
Baylor Foundation Lesotho was awarded a cooperative agreement to implement the CoHip-SEC Project in the four districts of Berea, Maseru, Mafeteng and Mohale's Hoek. The CoHip-SEC Project was launched under PEPFAR on September 30th, 2022, with an end date of September 29th, 2027. However, in the second year of implementation the geographical scope was changed, and support was shifted to 4 districts of Leribe, Berea, Quthing and Qacha's Nek. The Lesotho Network of People Living with HIV and AIDS (LENEPWAHA) is a sub-recipient to Baylor Foundation Lesotho in the project.

Objective:

Integrated Programming of DREAMS Core Package of Interventions for AGYW and their Sexual Partners.

The services provided are as reflected in the picture below:

	Static site per district (2 in Leribe)
	Community HTS with Comprehensive Prevention*
	Community HTS, ART initiation, Linkage to Prevention
	AGY Violence Prevention and Gender Programming
	Mobile Clinic for services requiring privacy eg STI screening, CaCx screening



PROVIDING PREVENTION AND TREATMENT FOR YOUNG PEOPLE (PROTECT)

PROTECT is a 3-year project funded by The Global Fund, through the Ministry of Finance Project Management Unit (PMU) under the grant cycle 7 (GC7). It started on 01st April 2024 and will end on 31st March 2027.



Project Goal

An AIDS-free population of adolescents and young people (AYP) through community-based HIV testing and SRH services.



Objectives:

- Accelerate demand creation for services in the community,
- Offer HTS and family planning services in the community,
- Provide and link patients to ART.

The PROTECT project provides community-based services in six districts: Mokhotlong, Butha-Buthe, Leribe, Thaba-Tseka, Quthing and Qacha's Nek. The following services are offered: HTS, same day ART initiation, linkage to care, STI screening and management, TB screening, PrEP initiation, family planning, Community Adherence Monitoring and Refill Assistance (CAMARA) groups, as well as cervical cancer screening to newly identified HIV positive AGYW eligible for screening.



PROTECTING WOMEN, INFANTS, AND CHILDREN FROM HIV (PINCH)

Baylor Foundation Lesotho is implementing the Protecting Women, Infants, and Children from HIV (PINCH) project which came into effect on 01st April 2024 with a 3-year implementation period and will end on 31st March 2027.). The program is funded by The Global Fund and Baylor Foundation Lesotho is a sub-recipient to the Ministry of Finance PMU. It is implemented in the 5 highlands districts of Mokhotlong, Butha-Buthe, Thaba-Tseka, Quthing, and Qacha's Nek.

Project Goal

PINCH aims to support the national strategy to eliminate mother-to-child transmission of HIV (EMTCT), reducing the rate from 8.73% to less than 5%.

Project objectives:

- Increase uptake of maternal-child health services, including PMTCT, as evidenced by increased ANC attendance, higher PMTCT coverage rates, and timely testing of exposed infants at 6 weeks of age.
- Retention in care of HIV-exposed infants (HEI) and provision of treatment for all HIV-infected infants.

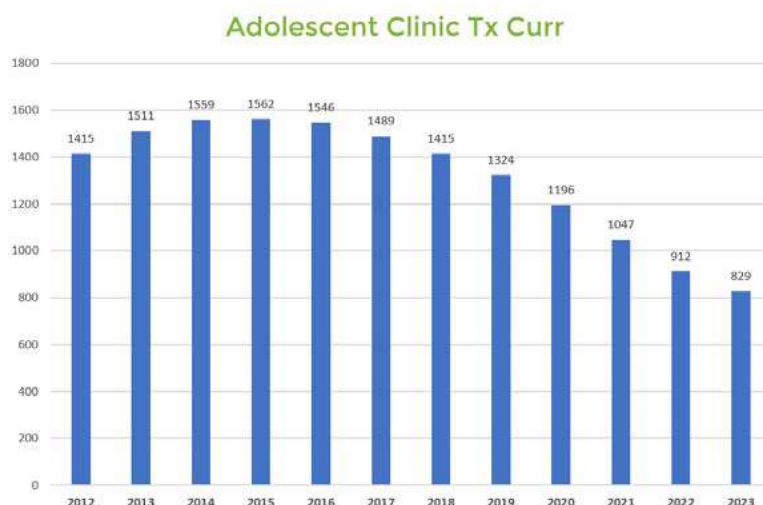


ADDITIONAL PROJECTS

ADOLESCENT PROGRAM

Baylor Foundation Lesotho established an adolescent clinic on 1st June 2012 when Queen 'Mamohato Memorial Hospital (QMMH) was opened. The adolescent clinic was integrated within this facility until June 2024, when the services were shifted back to the COE premises. The clinic aims to provide holistic, adolescent-friendly services in a safe space where adolescents could attend independently and access a full range of services. The shift of the adolescent clinic back to the COE has tempered with the absolute model of providing services to adolescent in their safe space. However, quality services continue to be provided with fidelity.

The number of adolescent patients served has steadily declined from a peak of 1,562 patients in 2015, reflecting the successes of PMTCT programs in Lesotho as well as a successful transition of the age cohorts.





SUCCESS STORY

From Hopelessness to Hope: Nkalimeng's Journey of Resilience and Opportunity


My name is Nkalimeng Agnes Sechaba. I'm a 23-year-old Mosotho woman from Thetsane, Maseru. I hold a Certified Accounting Technician qualification from the Centre for Accounting Studies. But my story is not one of instant success; it's a story of quiet strength, waiting, and an unexpected chance to rise.

After I completed my studies in 2020, I returned home with high hopes and a head full of dreams. But home was not an easy place. I was raised by my father, a single parent who, despite his love and care, had no job and no steady income. Each day, I watched the weight he carried for both of us. I wanted to help. I tried to start a small fruit and snack business from home, but without capital, my effort quickly failed. I felt stuck, qualified but unable to find work. Hope was beginning to slip through my fingers.

Then one day, someone told me about DREAMS. I didn't know what to expect, but I showed up. That decision changed everything.

This year, I received a call I will never forget. As part of the DREAMS program, I was being offered an internship. After years of applying for jobs with no response, it felt like someone had finally heard me. I was filled with excitement and relief. The internship came with a stipend, modest but meaningful. It meant I could breathe. It meant I could plan.


"I can't thank the DREAMS program enough for the opportunities I received: to be part of the team, to take part in an internship, and to become a SILC member as well."



I made a promise to myself: I would not waste this opportunity. I joined a SILC (Savings and Internal Lending Community) group. I knew that if the internship ended, I needed to be ready. At first, I didn't receive a loan because funds were limited. But by the end of May, I was able to borrow. That loan helped me pay for household expenses, and with what remained, I started a small airtime business.

Now, when I look ahead, I see something I hadn't seen clearly before—possibility. With my SILC savings, I am building my future. When the share-out comes, I'll finally have the capital to start the business I once only dreamed of.

I share my story to say this: DREAMS gave me a second chance. SILC gave me a lifeline. To anyone who feels forgotten or stuck, I encourage you to join a SILC group. It can change your life.



BAYLOR FOUNDATION

LESOTHO