

BY THE NUMBERS

Cancer and Hematology Centers

Ranked **4th** in
pediatric cancer
by *U.S. News & World Report*



Largest pediatric cancer and
hematology center in the
United States

91,700
outpatient clinic
visits per year



120 bone marrow
transplants each year



3,680
new patients
diagnosed each year



80 average
inpatients per day

200 active therapeutic
clinical trials



350 researchers
and staff in 46 different
laboratories



Over
\$**200** million in total
external peer reviewed funding
including \$50 million in 2017



Patients from
35 states and
26 countries



4 Texas
locations

Houston
Katy
McAllen
The Woodlands



Outreach in 8
international locations with
over 1,000 new patients per year

Angola
Botswana
Lesotho
Liberia
Malawi
Swaziland
Tanzania
Uganda



190 physicians and scientists



Over
1,000 employees



24 hematology
and oncology fellows

30,000 long term pediatric
cancer survivors nationwide enrolled by
Children's Oncology Group centers in the
Passport for Care®, an online resource
developed by Texas Children's Hospital
and Baylor College of Medicine



texaschildrens.org/cancer
texaschildrens.org/txchbtn

BY THE NUMBERS

Cancer and Hematology Centers Global HOPE Program in Africa

ANGOLA

Over
244,000 babies screened
for sickle cell disease since July 2011

Over
2,300 children receiving
treatment for sickle cell disease

MALAWI

Over
250 new cancer patients each year

Over
200 patients receiving treatment
for hematologic disorders

UGANDA

1st ever pediatric hematology-oncology
fellowship program for East Africa

Over
400 new cancer patients each year

BOTSWANA

Over
60 new cancer patients each year,
three times more than when the program started

Over
10 years of providing pediatric
hematology-oncology services

LESOTHO, LIBERIA, SWAZILAND AND TANZANIA

Medical consultations to local physicians

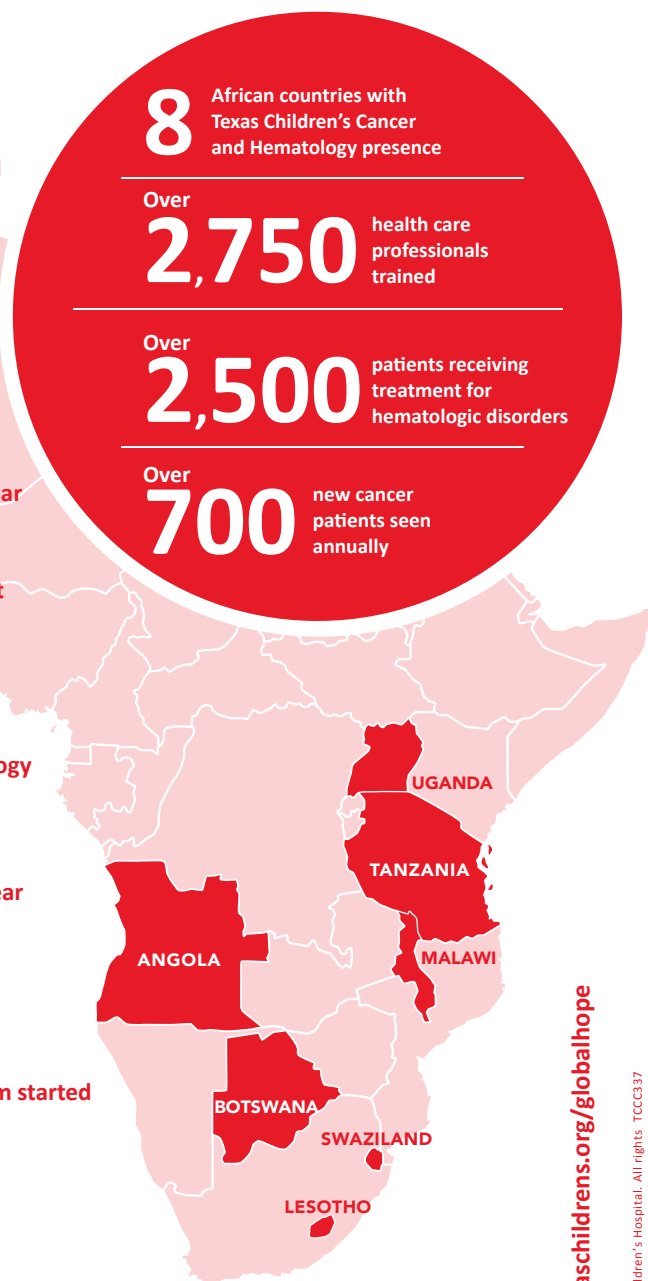
Research for pediatric cancers and blood disorders

8 African countries with
Texas Children's Cancer
and Hematology presence

Over
2,750 health care
professionals trained

Over
2,500 patients receiving
treatment for
hematologic disorders

Over
700 new cancer
patients seen
annually



Periwinkle Arts in Medicine Program at Texas Children's Cancer and Hematology Centers
Established in 1997

12,000 annual
art encounters with
patients and families



3,000 annual
volunteer hours



1,070 songs written
and recorded (260 annually)
by patients and siblings with
Purple Songs Can Fly



230 hours of
annual creative writing
programming provided
to patients and families



300 poems and stories
published annually in *The
Splendid Review* since 1999



14 artist groups
involved including:

Houston Center for Photography
Houston Symphony Orchestra
Museum of Fine Arts Houston



7,500 pieces
of art exhibited by
patients and siblings
at *Making a Mark*

10 exhibits of *Making
a Mark* in 2015-2016

24 countries
represented at
Making a Mark
since 1991

25,000 postcards
from the road sent to
Making a Mark artists

16 large-scale canvas
reproductions of *Making
a Mark* art on exhibit at
Houston's George Bush
Intercontinental Airport

