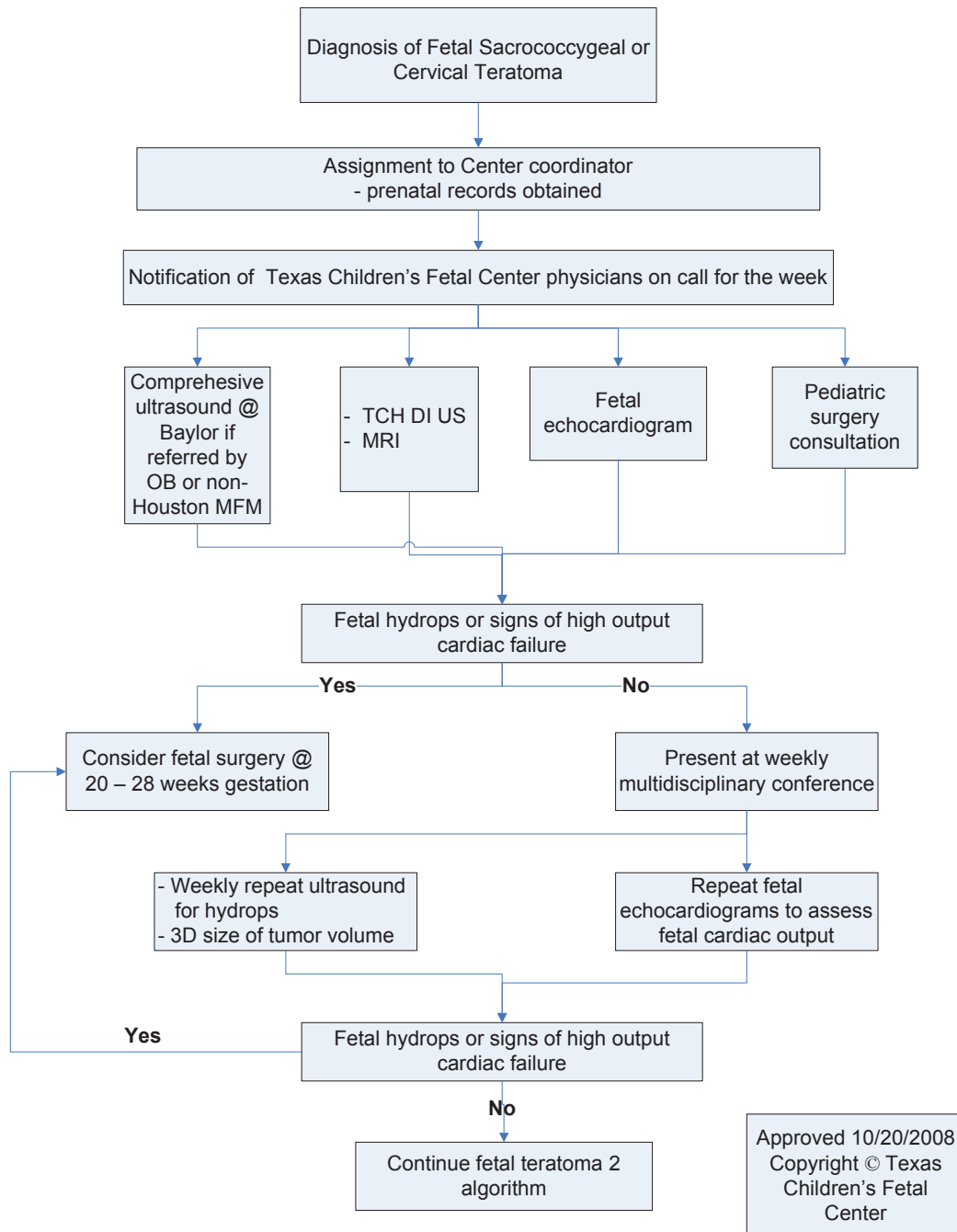


Fetal Algorithm Fetal Teratoma I



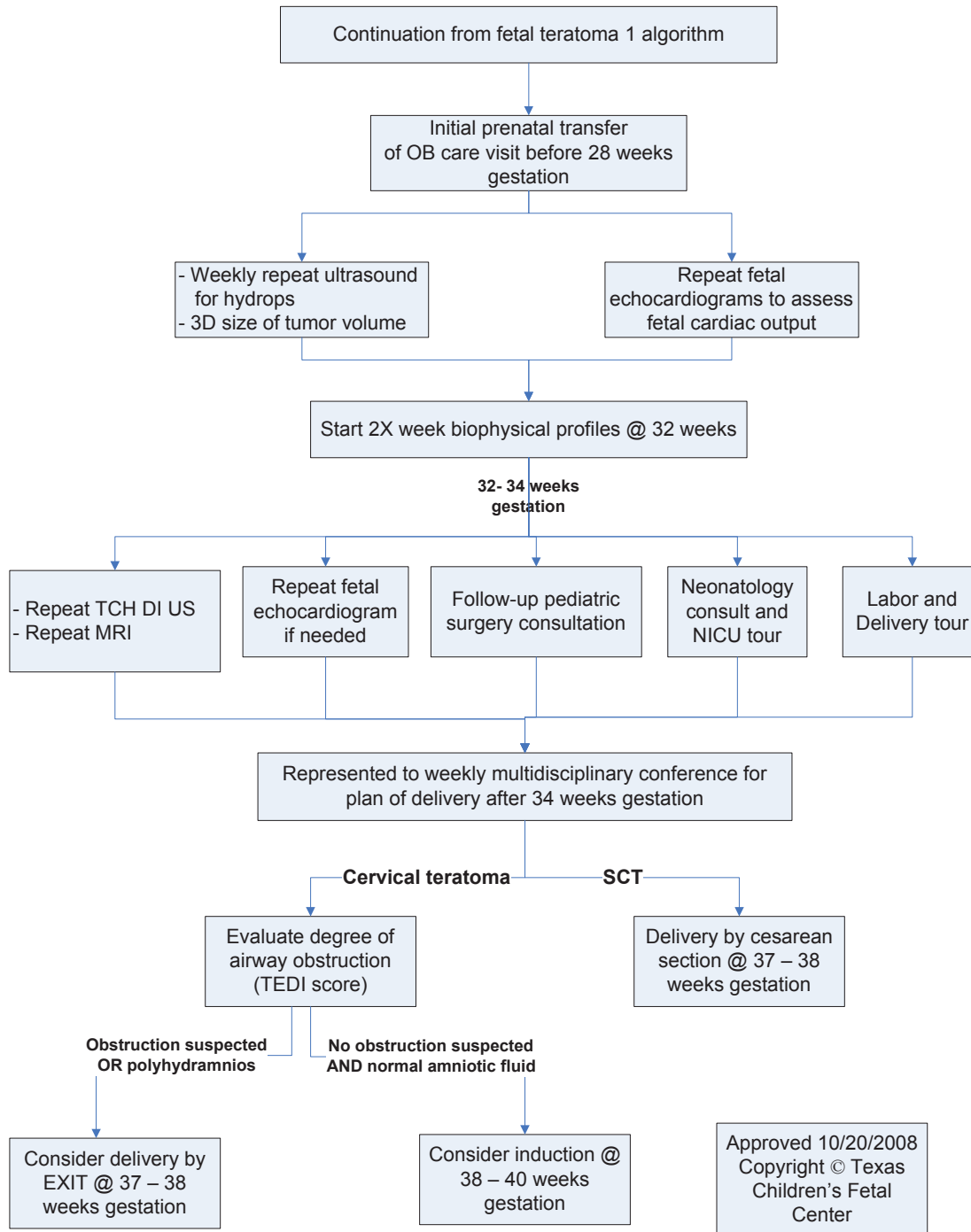
Approved 10/20/2008
Copyright © Texas Children's Fetal Center

This algorithm has been developed for the purpose of unifying the general care of patients. They are not intended to serve as a rigid protocol or a written proxy for the standard of care. It is not intended to impose standards of care preventing selective variances from the guidelines to meet the specific and unique requirements of individual patients. These algorithms do not preclude the use of the physician's clinical judgment in a specific situation. The algorithms remain the intellectual property of Texas Children's Hospital. They cannot be reproduced in whole or in part without the expressed permission of Texas Children's Hospital.

© 2011 Texas Children's Hospital Pediatric Associates. All rights reserved. FCI164_013111

Fetal Algorithm

Fetal Teratoma 2



This algorithm has been developed for the purpose of unifying the general care of patients. They are not intended to serve as a rigid protocol or a written proxy for the standard of care. It is not intended to impose standards of care preventing selective variances from the guidelines to meet the specific and unique requirements of individual patients. These algorithms do not preclude the use of the physician's clinical judgment in a specific situation. The algorithms remain the intellectual property of Texas Children's Hospital. They cannot be reproduced in whole or in part without the expressed permission of Texas Children's Hospital.

© 2011 Texas Children's Hospital Pediatric Associates. All rights reserved. FCI164_013111