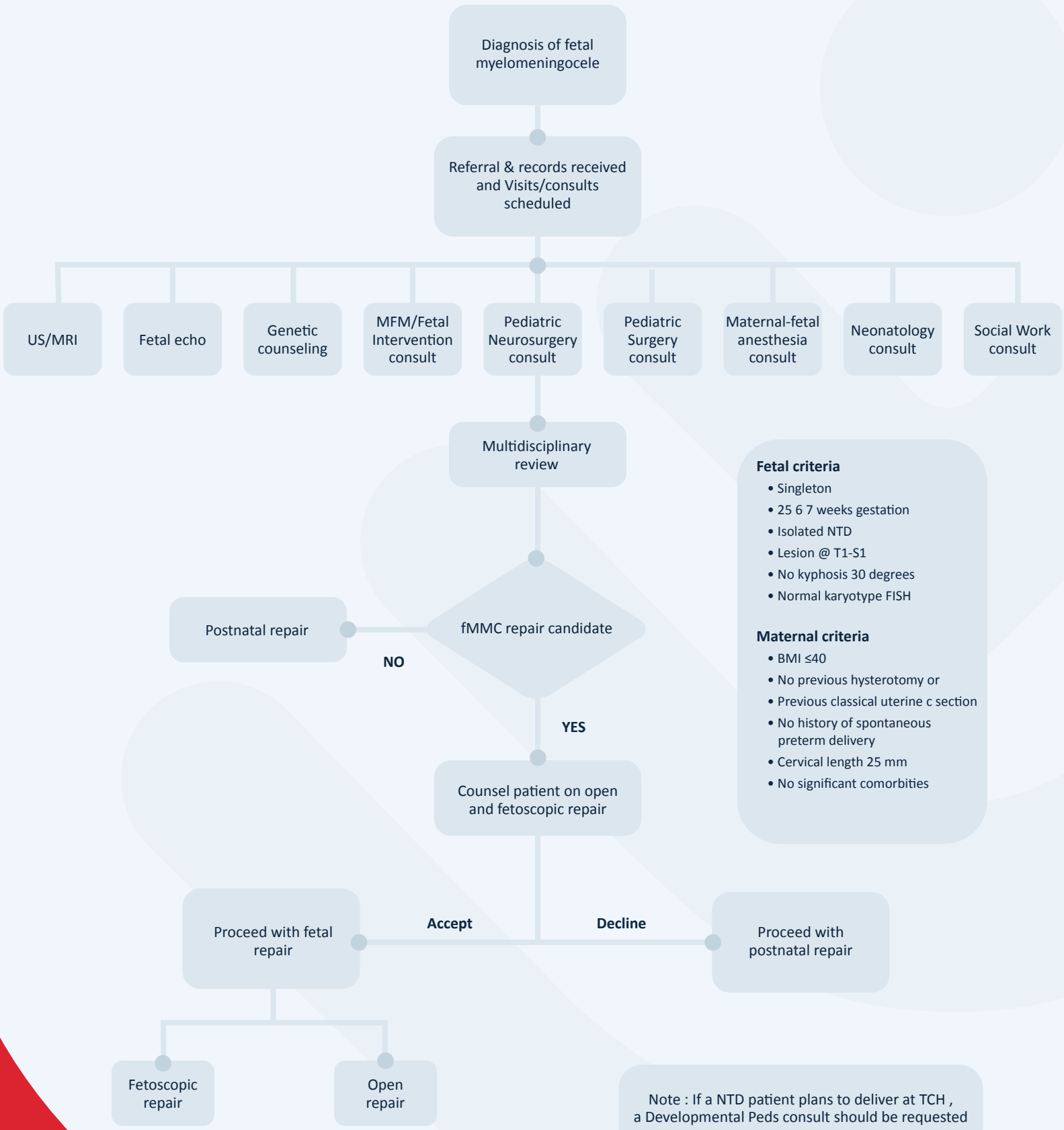


Fetal Myelomeningocele (fMMC)



- Fetal criteria**
- Singleton
 - 25 6 7 weeks gestation
 - Isolated NTD
 - Lesion @ T1-S1
 - No kyphosis 30 degrees
 - Normal karyotype FISH
- Maternal criteria**
- BMI ≤40
 - No previous hysterotomy or previous classical uterine c section
 - No history of spontaneous preterm delivery
 - Cervical length 25 mm
 - No significant comorbidities

Note : If a NTD patient plans to deliver at TCH , a Developmental Peds consult should be requested